

A blurred screenshot of the barox configuration tool's user interface. It shows various input fields, buttons, and a sidebar, typical of a software configuration window.

# **Quick-Start Software Guide**

# **barox Konfigurationstool**

# **b!ench**

# barox Switch Config Tool !bench

---

barox Kommunikation Oktober 2021  
Copyright © 2022 by barox Kommunikation AG  
Guide Version 1.1

## Software version guide as of 1.0.1.0

### System requirements:

- x86 (Intel or AMD equivalent) based 4 core CPU (minimum 2 core and 2 threads)  
Computer with Ethernet and TCP/IP interface
- 4 GB RAM
- MS Windows 7 or 10 x64 (administrative or superuser rights required)
- barox 19" and DIN rail switches of the RY series with current firmware (please contact us if you have further questions about compatibility with individual devices)

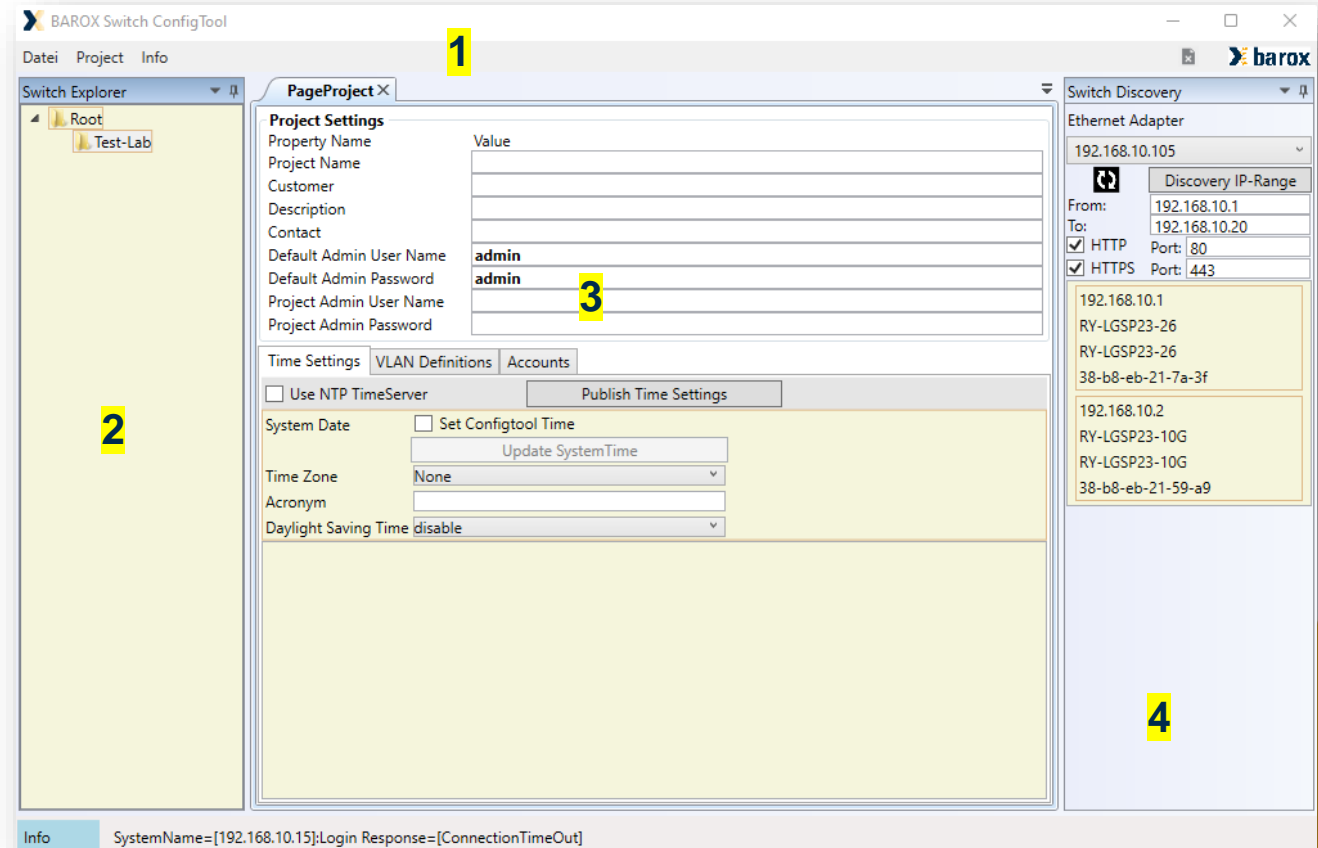
Intel, AMD, MS Windows (Microsoft) are registered trademarks of their respective companies.

---

# barox Switch Config Tool !bench

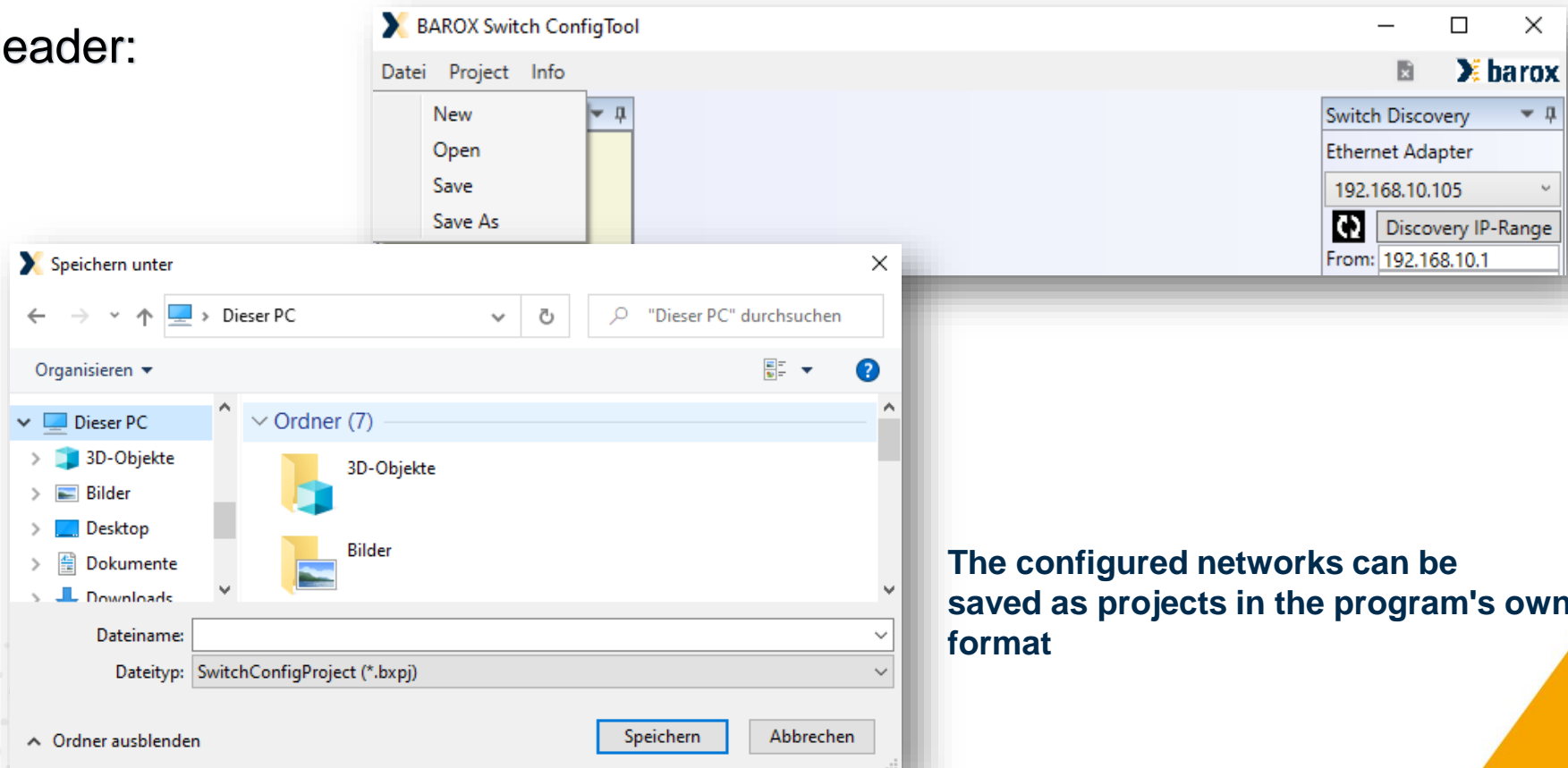
## Overview:

- 1 Header Program Control
- 2 Administration area  
Switch network tree
- 3 Configuration area
- 4 Networkdiscovery and  
listing switches



# barox Switch Config Tool !bench

Header:



The configured networks can be saved as projects in the program's own format

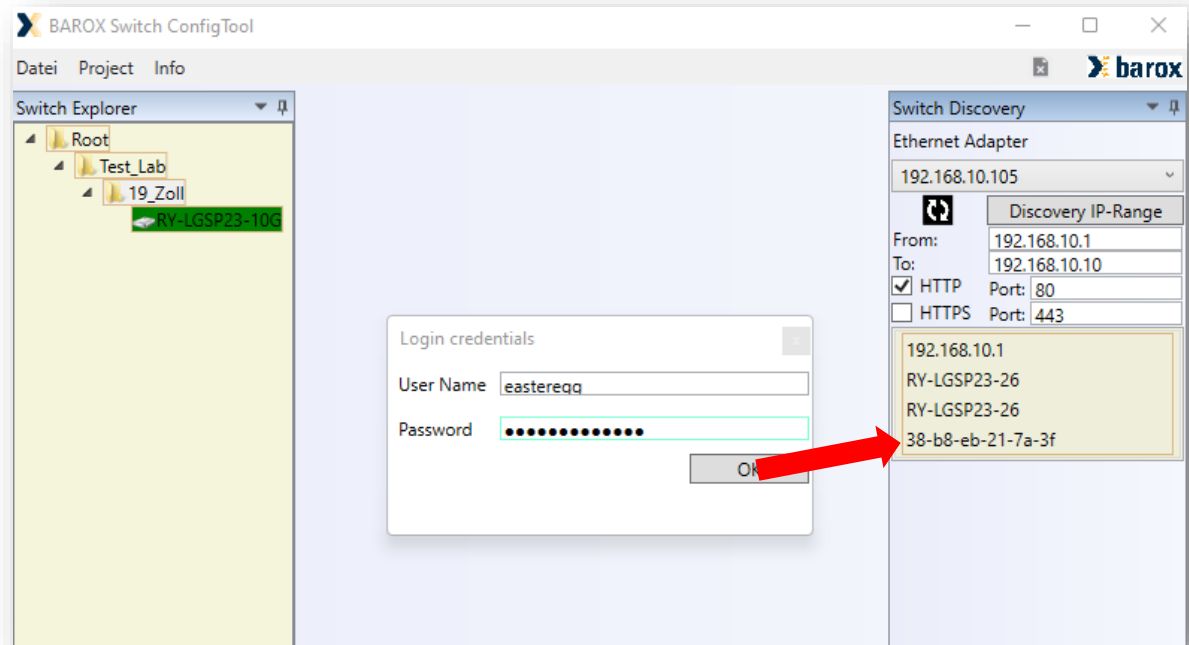
## barox Switch Config Tool !bench

### Search in discovery area:

By clicking on the range "Discovery IP-Range" the respective Ethernet port the search for the barox switches of the specified IP range is started in the program. Clicking again ends the search immediately. The found devices are listed.

For existing networks, the search can be performed using either HTTP or HTTPS port. By double-clicking on the respective listed switches the current user parameters can be specified for existing devices.

When commissioning new devices, the program automatically uses the factory user parameters.



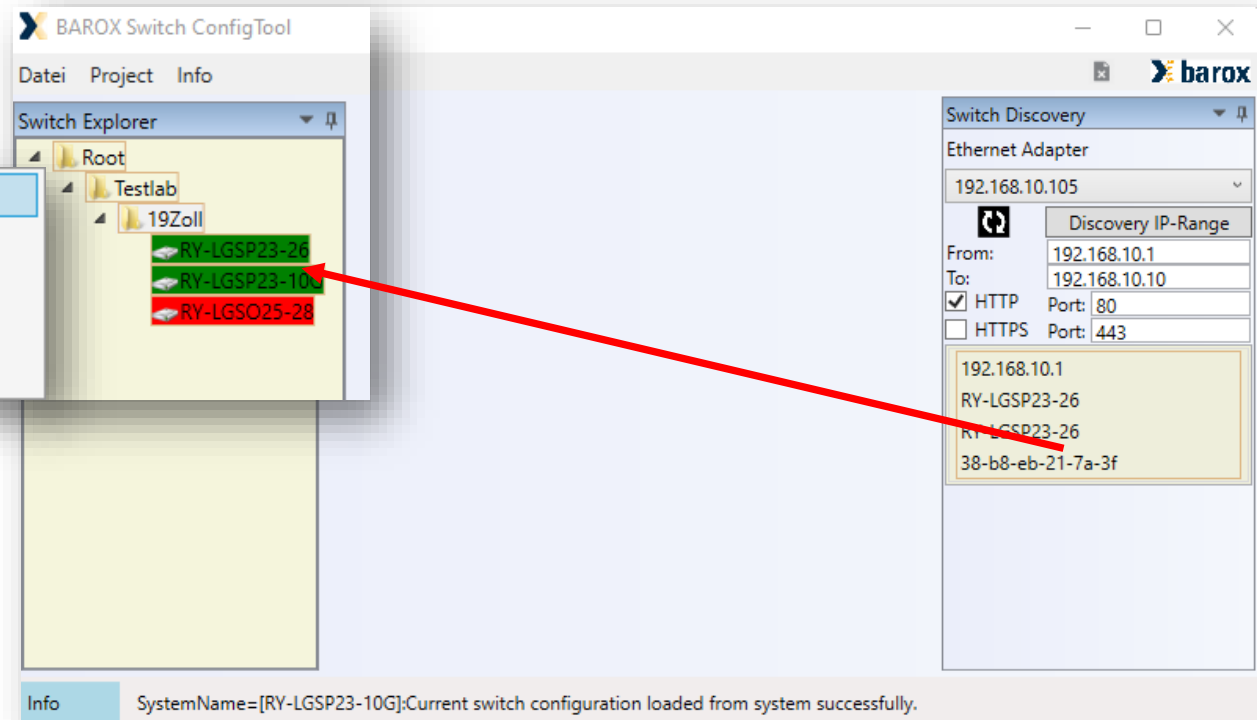
# barox Switch Config Tool !bench

## Administrations tree Switch Explorer:

- Add new folder
- Add new switch
- Remove
- Send config to switches
- Web

In the area with right click you can e.g. define the directory structure for the organization of the respective network can be created.

Switches are created by click & drag from the discovery area added. Active components are shown in green and inaccessible ones in red. The actions refer to the respective folders and devices.

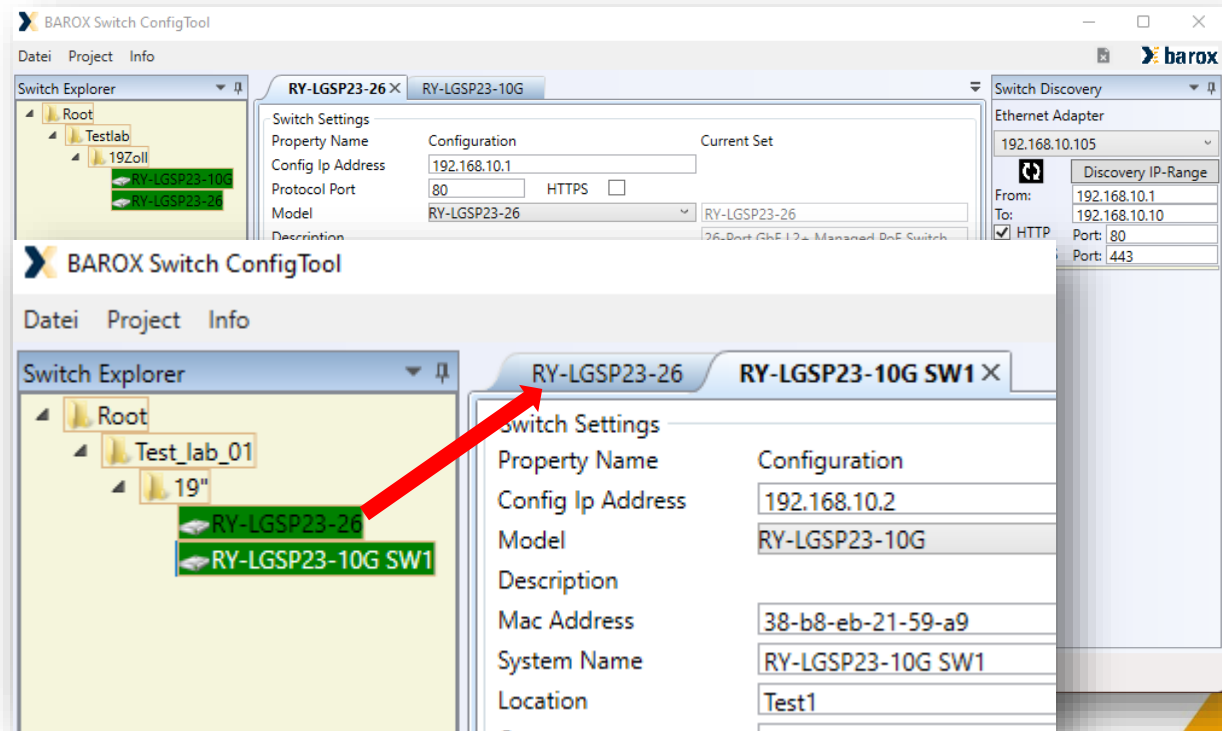


# barox Switch Config Tool !bench

## Configuration area:

Double-clicking on the respective switch symbol in the switch explorer opens the register for parameterization and control in the configuration area.

The registers can be arranged horizontally as needed to the arrangement be shifted.



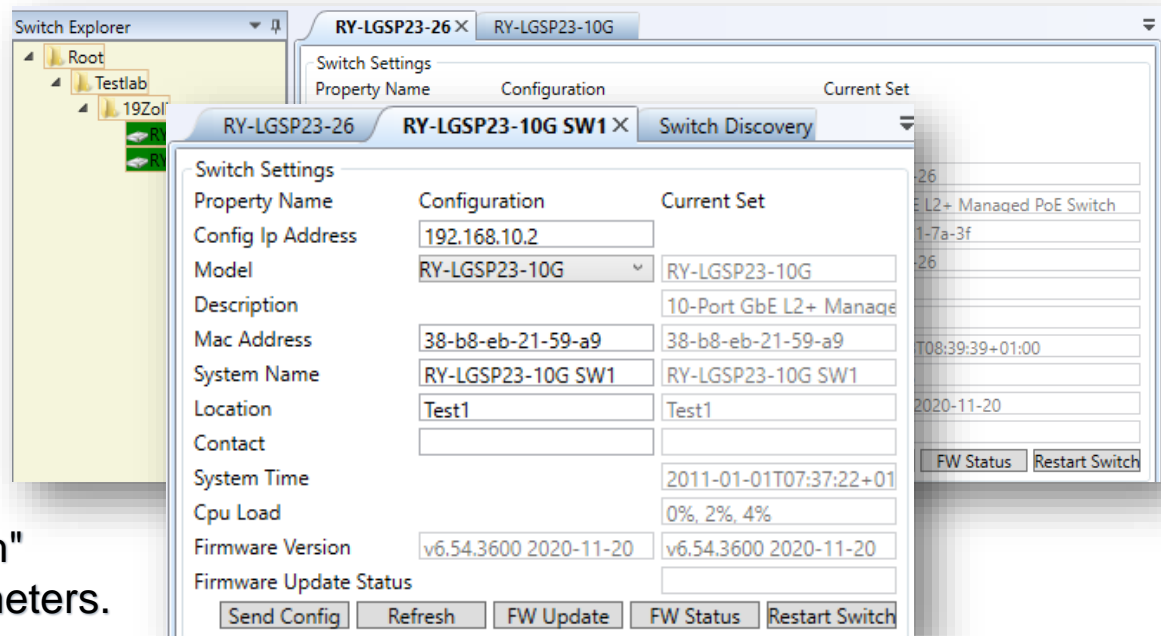


# barox Switch Config Tool !bench

## Configuration area:

Besides the basic switch parameters, other actions can be performed.

The "Send Config" button sends the current configuration to the switch and causes Startupconfig to be saved. "Refresh" triggers a new loading of the parameters.

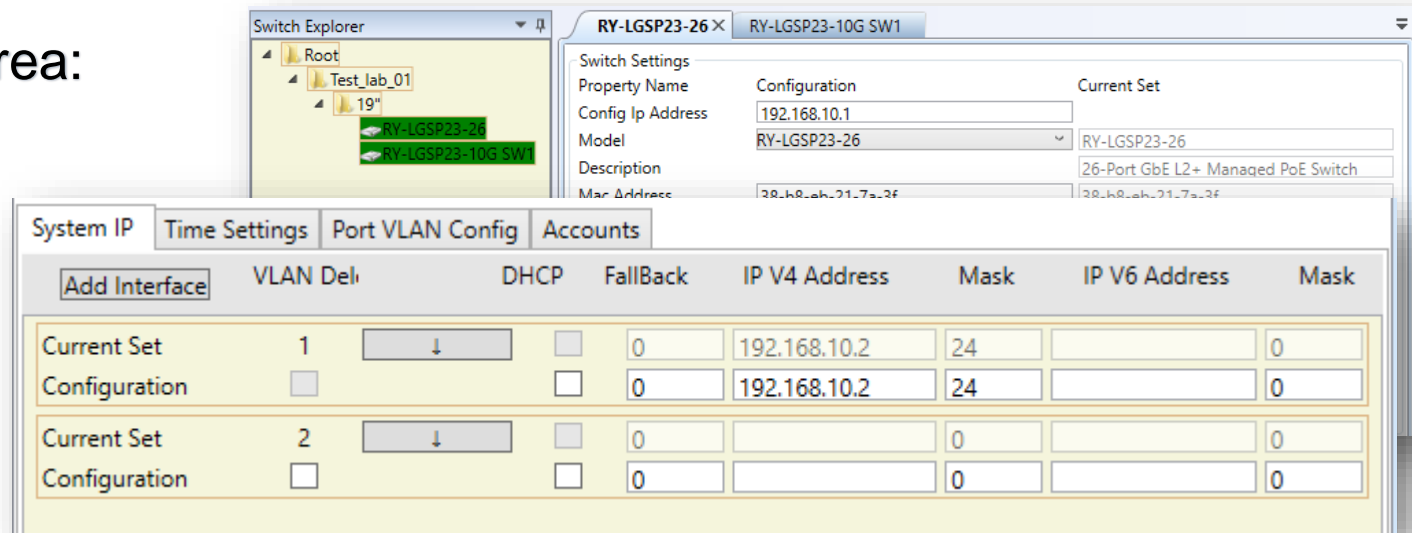


The "FW Update" function opens the dialog for selecting a firmware file and the "Open" option starts the update. During the update, the update status can be queried using the control panel. "Restart Switch" triggers a restart of the switch.



# barox Switch Config Tool !bench

Configuration area:



The screenshot shows the 'RY-LGSP23-26' configuration window. The 'Switch Explorer' on the left shows a tree structure with 'Root', 'Test\_lab\_01', and '19' (containing 'RY-LGSP23-26' and 'RY-LGSP23-10G SW1'). The main configuration area has tabs for 'System IP', 'Time Settings', 'Port VLAN Config', and 'Accounts'. The 'System IP' tab is active, showing a table with columns: 'Add Interface', 'VLAN Del.', 'DHCP', 'FallBack', 'IP V4 Address', 'Mask', 'IP V6 Address', and 'Mask'.

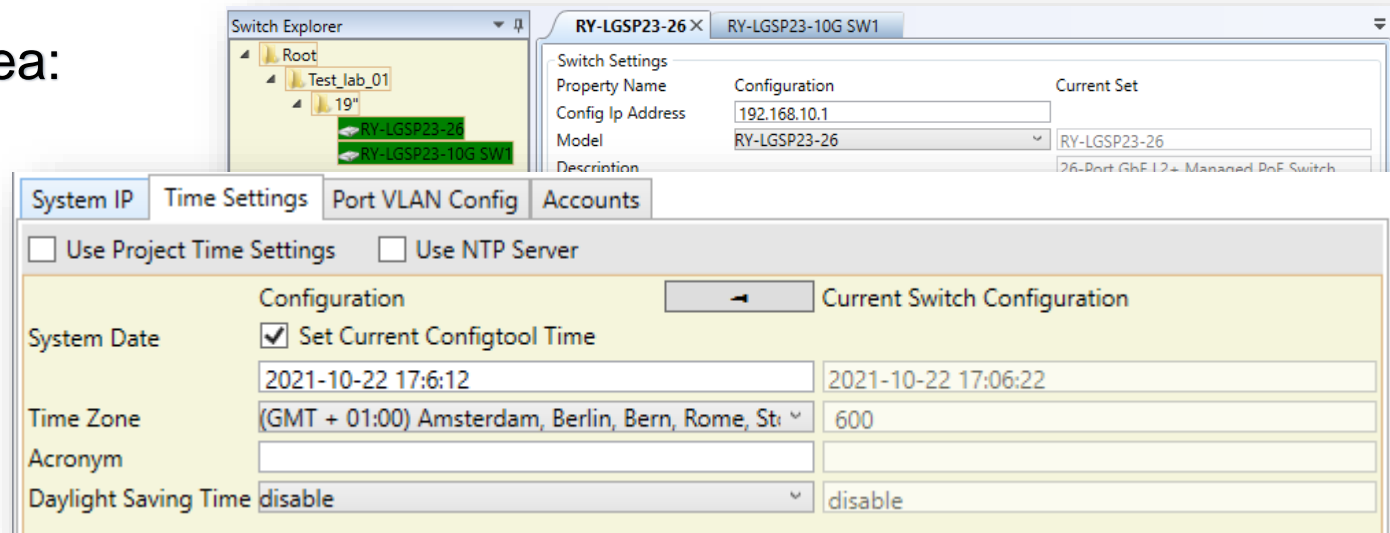
Add Interface	VLAN Del.	DHCP	FallBack	IP V4 Address	Mask	IP V6 Address	Mask
Current Set	1	<input type="checkbox"/>	0	192.168.10.2	24		0
Configuration	<input type="checkbox"/>	<input type="checkbox"/>	0	192.168.10.2	24		0
Current Set	2	<input type="checkbox"/>	0		0		0
Configuration	<input type="checkbox"/>	<input type="checkbox"/>	0		0		0

System IP

The button "Add Interface" offers the possibility to create IP interfaces for further VLANs.

# barox Switch Config Tool !bench

Configuration area:

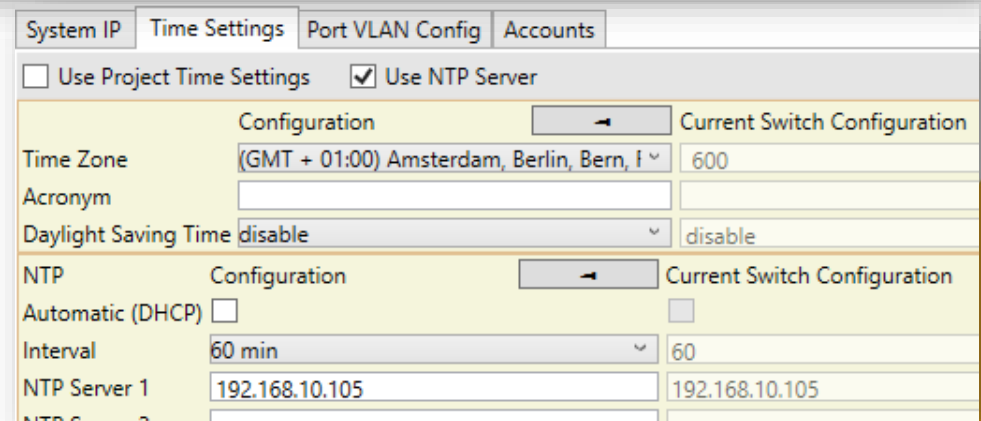


Switch Settings		Configuration	Current Set
Property Name		192.168.10.1	
Config Ip Address		192.168.10.1	
Model	RY-LGSP23-26		RY-LGSP23-26
Description			26-Port GbE 12+ Managed PoE Switch

Time Settings		Configuration	Current Switch Configuration
<input type="checkbox"/> Use Project Time Settings		<input type="checkbox"/> Use NTP Server	
System Date	<input checked="" type="checkbox"/> Set Current Configtool Time	2021-10-22 17:6:12	2021-10-22 17:06:22
Time Zone	(GMT + 01:00) Amsterdam, Berlin, Bern, Rome, St...	600	
Acronym			
Daylight Saving Time	disable	disable	

Time Settings

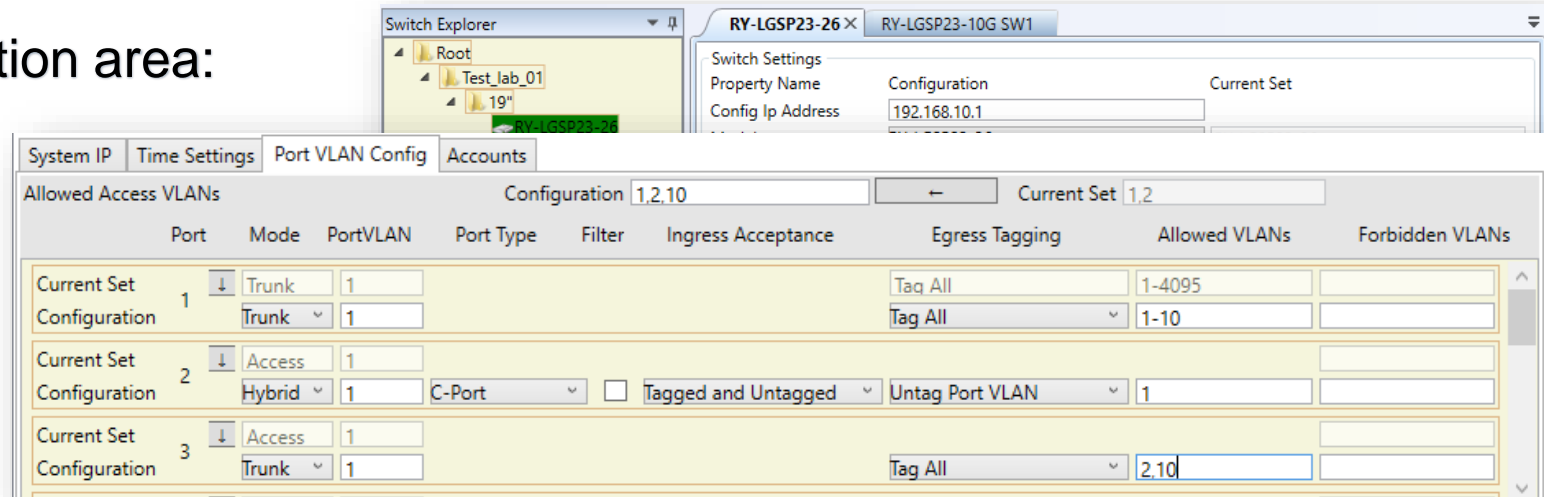
The time settings can be set manually or additionally with the option "Set Current Configtool Time" the system time of the tool can be sent to the switch. With the "Use NTP Server" option, NTP servers and their addresses can be configured as timers as an alternative.



Time Settings		Configuration	Current Switch Configuration
<input type="checkbox"/> Use Project Time Settings		<input checked="" type="checkbox"/> Use NTP Server	
Time Zone	(GMT + 01:00) Amsterdam, Berlin, Bern, Rome, St...	600	
Acronym			
Daylight Saving Time	disable	disable	
NTP		Configuration	Current Switch Configuration
Automatic (DHCP)	<input type="checkbox"/>		
Interval	60 min	60	
NTP Server 1	192.168.10.105	192.168.10.105	
NTP Server 2			

# barox Switch Config Tool !bench

## Configuration area:



Switch Explorer

RY-LGSP23-26 X RY-LGSP23-10G SW1

Switch Settings

Property Name Configuration Current Set

Config Ip Address 192.168.10.1

System IP Time Settings Port VLAN Config Accounts

Allowed Access VLANs Configuration 1,2,10 Current Set 1,2

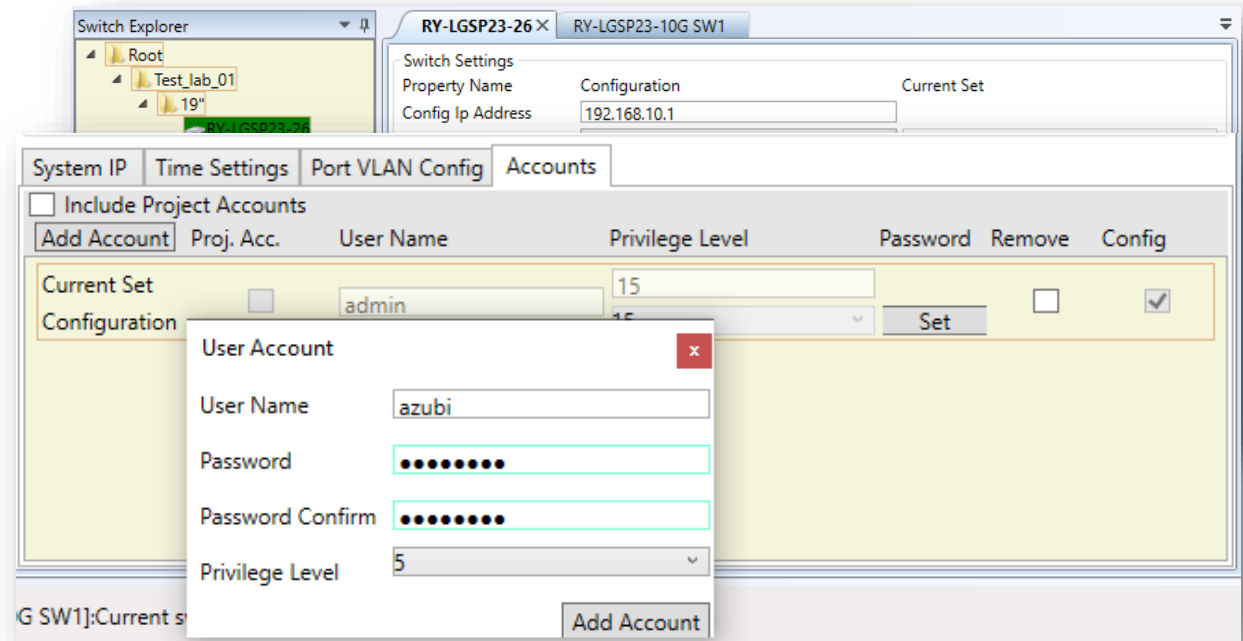
Port	Mode	PortVLAN	Port Type	Filter	Ingress Acceptance	Egress Tagging	Allowed VLANs	Forbidden VLANs
Current Set 1	Trunk	1				Tag All	1-4095	
Configuration 1	Trunk	1				Tag All	1-10	
Current Set 2	Access	1						
Configuration 2	Hybrid	1	C-Port		Tagged and Untagged	Untag Port VLAN	1	
Current Set 3	Access	1						
Configuration 3	Trunk	1				Tag All	2,10	

## VLAN Configuration

In the configuration area "Port VLAN Config", the VLAN configuration can be done per port. The Access, Trunk and Hybrid modes with the respective tagging functions are available.

## barox Switch Config Tool !bench

Configuration area:



Accounts

The "Add Account" button opens the dialog to create additional users with corresponding attributes in the switch.

## barox Switch Config Tool !bench

### Further functions:

Right click on switch icon in the administration tree:

"Send config to switches" saves all configurations of the switches in the respective folder.

The "Web" function opens the GUI of the respective switch with the standard browser stored in the system.

